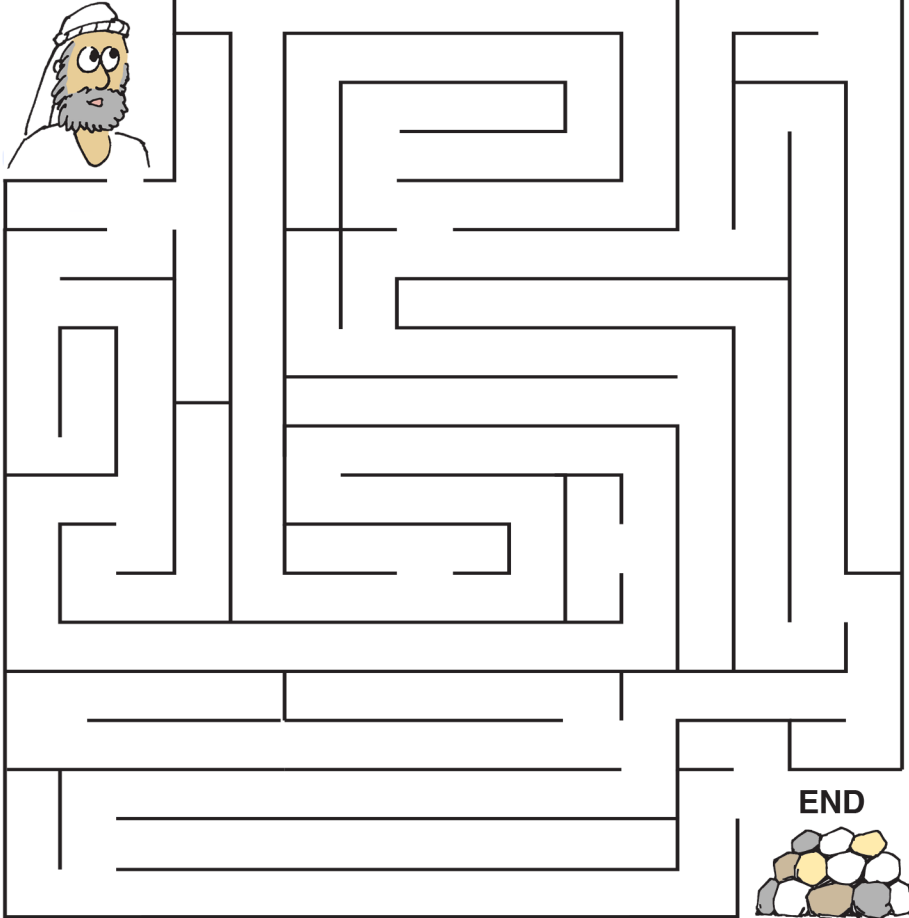




From there he went on toward the hills east of Bethel and pitched his tent, with Bethel on the west and Ai on the east.

Help Abram find the path through the maze.

START



There he built an altar to the LORD and called on the name of the LORD. Then Abram set out and continued toward the Negev.

Ages 7+

June 7, 2026 • Genesis 12:1-9

The Call of Abram

The LORD had said to Abram, "Go from your country, your people and your father's household to the land I will show you. I will make you into a great nation ...,"

Use the code to write the words on the blanks.

△ = I	☆ = great	○ = you	□ = name
◇ = peoples	◇ = bless	▽ = curse	⬡ = earth

... and △ will ◇ ○; △ will make
○r □ ☆, and ○ will
 be a ◇ing. △ will ◇
 those who ◇ ○, and whoever
▽s ○ will ▽;
 and all ◇ on ⬡ will
 be ◇ed through ○."

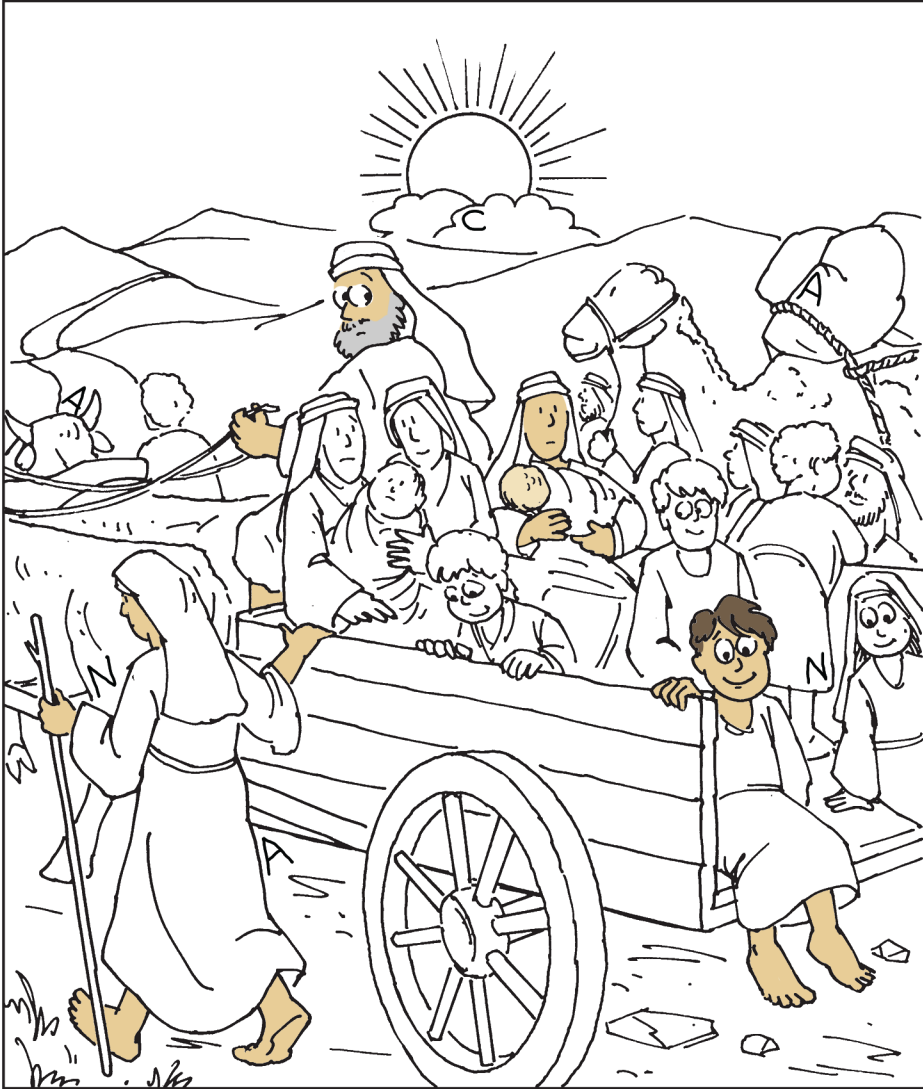


Aptos United Methodist Church

aptosumc.org

So Abram went, as the LORD had told him; and Lot went with him. Abram was seventy-five years old. ...

Circle the hidden letters. C A N A A N



... He took his wife Sarai, his nephew Lot, all the possessions they had accumulated and the people they had acquired in Harran, and they set out for the land of Canaan, and they arrived there.

Abram traveled through the land as far as the site of the great tree of Moreh at Shechem.

Write the letter that is in the first word, but not the second. Then read the letters from top to bottom, and write the word on the blank below.

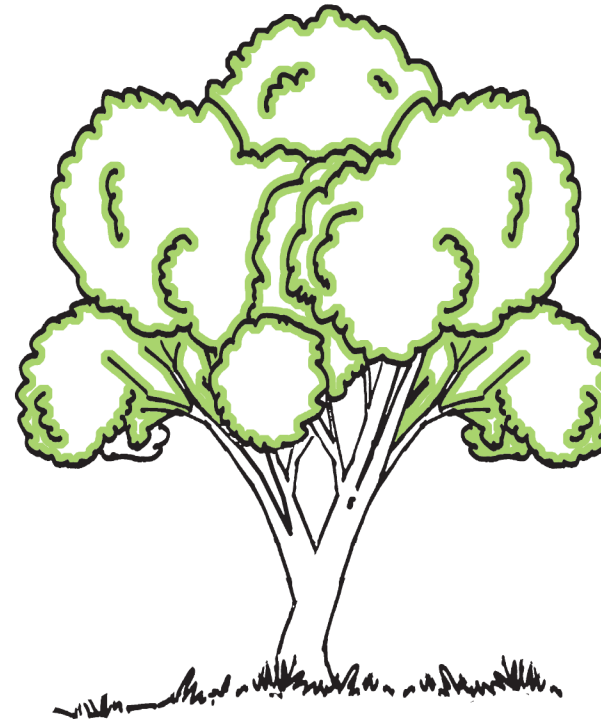
In STEAM but not STEM =

In BANGLE but not BEGAN =

In STARE but not EARS =

In CHAIR but not RICH =

In ROAST but not OATS =



The LORD appeared to Abram and said, "To your offspring I will give this land." So he built an

_____ there to the LORD, who had appeared to him.